



MONTHLY MEMBERSHIP PROGRESS REPORT

Results as of: 1/31/2015

Multiple District 29

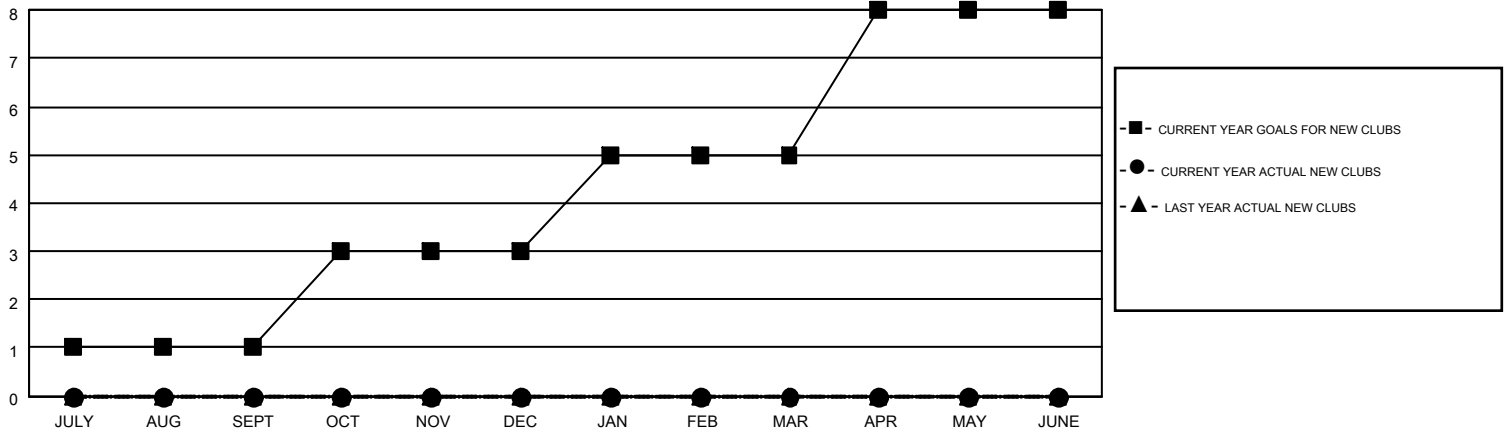
LOCATION: WEST VIRGINIA

GMT: JERRY SMITH

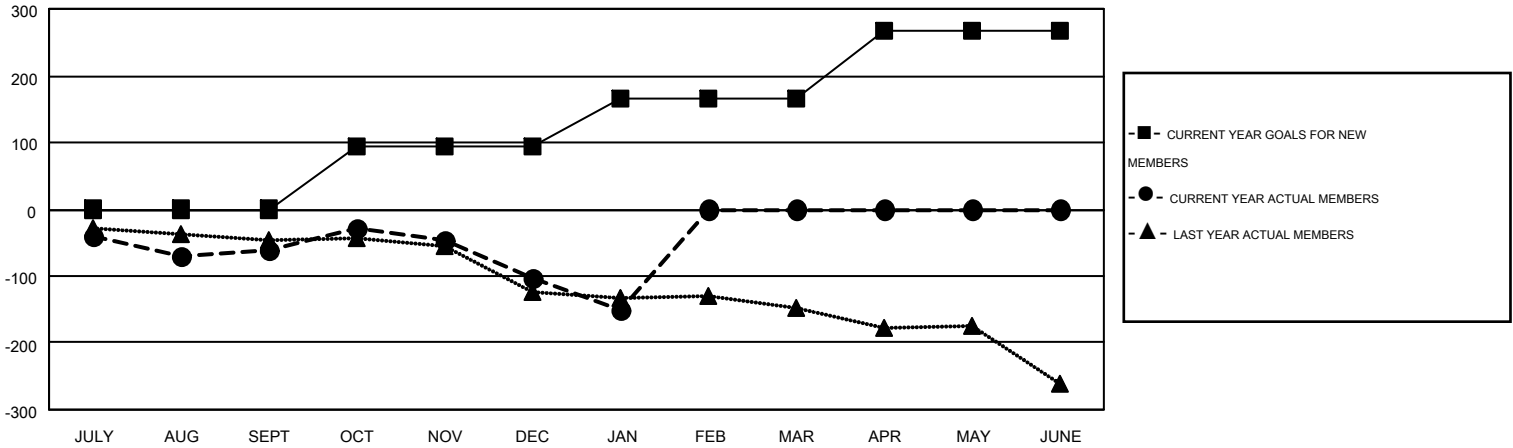
GMT CA 1

Clubs					Members				
RESULTS FOR 2014-2015					RESULTS FOR 2014-2015				
QUARTER	NEW CLUB GOAL	NEW CLUBS	DROPPED CLUBS	NET GAIN/LOSS	QUARTER	NEW MEMBER GOAL	CHARTER AND NEW MEMBERS ADDED	DROPPED MEMBERS	NET GAIN/LOSS
JULY/AUG/SEPT	1	0	2	-2	JULY/AUG/SEPT	0	78	140	-62
OCT/NOV/DEC	2	0	1	-1	OCT/NOV/DEC	95	92	134	-42
JAN/FEB/MAR	2	0	1	-1	JAN/FEB/MAR	72	30	78	-48
APR/MAY/JUNE	3	0	0	0	APR/MAY/JUNE	101	0	0	0

GOALS AND ACTUAL NEW CLUBS CUMULATIVE



GOALS AND ACTUAL MEMBERS CUMULATIVE



DROPPED CLUBS: 4	82 CLUBS OF 179 ADDED 1 OR MORE NEW MEMBERS	<u>GENDER DISTRIBUTION</u>	
		MALE	2,981 (68.28%)
		FEMALE	1,385 (31.72%)
<u>DROPPED MEMBERS</u>		<u>FAMILY UNIT MEMBERS</u> 1,227	
DECEASED	45	HEAD OF HOUSEHOLD	597
CLUB CANCELLED	11	NON-HEAD OF HOUSEHOLD	630
OTHER	296		
TOTAL	352		

[CLICK HERE FOR HEALTH ASSESSMENT DATA](#)